



# BEST of the ARCTIC

**SPITZBERGEN & GREENLAND**  
with optional Iceland add-on  
**AUGUST 16-30, 2025**

Join Blue Green Expeditions for an **EXCLUSIVE** special full boat charter aboard M/V Hondius for a rare opportunity to visit both Spitzbergen and Greenland! The best of the Arctic includes opportunities to see the polar bears and walrus of Spitzbergen and then transition through pack ice to visit a local Greenland village. The ice and history of Greenland is quite remarkable!

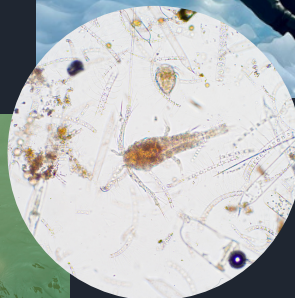
Travelers will have the opportunity to participate in several citizen science projects (phyto & zooplankton collections, benthic surveys, and beach clean ups of plastics and nets.)

Diving and snorkeling are offered, as well as talks by our team of renowned scientists and imagemakers. Your scientific knowledge and appreciation of this pristine, delicate Arctic ecosystem, and the megafauna we encounter will grow.


Land excursions, presentations by the expedition team, and zodiac tours will allow you to experience the very Best of the Arctic!

## GOALS

- Contribute to scientific knowledge of the Arctic ecosystem
- Raise funds for charities dedicated to getting youth involved in marine careers
- Use images/video from professionals and data collected from citizen scientists to develop multimedia educational tools across a variety of platforms, including live-streaming to classrooms
- Use the expertise of scientists onboard to explore new area above and below the water with the assistance of citizen scientists. Projects include plankton tows, reef surveys of key indicator species, sample collections and marine mammal ID.



**Faith Ortins**  
Faith@BlueGreenExpeditions.com

 [www.BlueGreenExpeditions.com](http://www.BlueGreenExpeditions.com)

 619.405.2493

 **Blue Green  
Expeditions**  
*See Your World in a Whole New Way*  
[bluegreenexpeditions.com](http://bluegreenexpeditions.com)



## WHAT'S INCLUDED

- Longyearbyen hotel 1 night 8/16/25
- 9 days exploring Spitsbergen (5 days), Scorsby Sound & Greenland (4 days) aboard Ortelius
- All meals aboard Ortelius
- Disembark Akureiyi, Iceland

## EXCLUSIONS

- International flights (arrive LYR, return from KEF)
- Gratuities
- Alcohol, boutique items
- Recommended trip insurance
- Required diving insurance
- Transfer to Reykjavik for return flight (for non-Iceland add-on)

### PRICING:

QUAD: \$9700  
TWIN PORTHOLE: \$12,500  
TWIN WINDOW: \$14,000  
TWIN DELUXE: \$15,200  
SUPERIOR: \$16,500  
DISCOUNT \$400 FOR NON-DIVER/NON-SNORKELER

### ICELAND ADD-ON AUG. 30-SEPT. 7

DIVER: \$4600  
NON-DIVER: \$4000

Deposit \$3000pp, plus \$1000 for Iceland  
2nd Payment August 15, 2024 - \$3000  
3rd Payment January 1, 2025 - \$3000  
Final Payment May 15, 2025  
All costs are shown in US dollars, per person based on double occupancy





**Blue Green  
Expeditions**

See Your World in a Whole New Way  
[bluegreenexpeditions.com](http://bluegreenexpeditions.com)

## CONTACT US:

**Faith Ortins**  
[Faith@BlueGreenExpeditions.com](mailto:Faith@BlueGreenExpeditions.com)

 [www.BlueGreenExpeditions.com](http://www.BlueGreenExpeditions.com)

 619.405.2493