

ANTARCTICA

January 9-22, 2026

Be part of a true expedition voyage to cruise into areas of amazing wildlife and huge tabular ice!



Citizen Science Focus

Inclusions

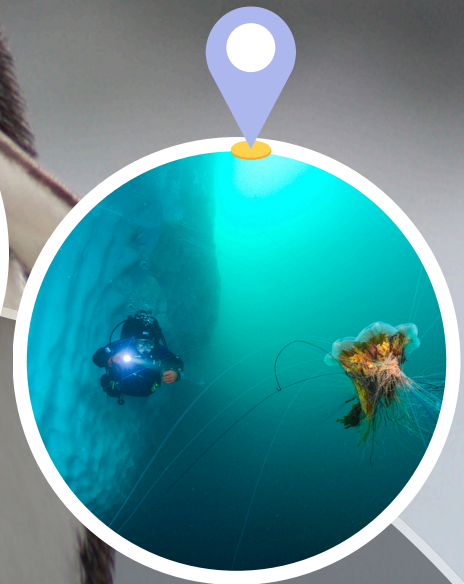
- All meals and accommodations aboard the ship, including snacks, coffee, and tea
- Overnight stay in Ushuaia on January 9, 2026
- All excursions and activities throughout the voyage
- Program of lectures by noted naturalists
- Free use of rubber boots
- Use of drysuits for snorkelers
- All transfers to and from the ship
- Expeditions led by Faith Ortins and other polar diving and photography experts
- All miscellaneous service taxes and port charges
- Comprehensive pre-departure materials



Weddell Sea Unexplored Sites!

Activities

- Photography Workshop
- Snorkeling
- Kayaking
- Scuba Diving (1-2 dives per day including tanks and weights)
- Participate in real science projects with expert researchers
- Naturalist, photography, and polar expert lectures
- Tierra del Fuego National Park tour (additional fee)



Polar Experts

Expert Hosts

- Faith Ortins
- Becky Kagan Schott
- Berkley White
- Cristian Demetrius
- Nancy McGee
- American Academy of Underwater Sciences team members
- More signing on...!



Book Now
619-405-2493

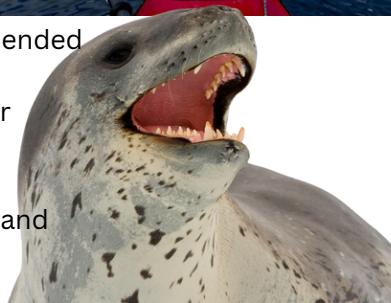
More Information

www.BlueGreenExpeditions.com
Faith@BlueGreenExpeditions.com

In celebration of the 65th anniversary of the start of the Antarctic Treaty, Blue Green Expeditions is hosting a truly unique voyage aboard m/v Ortellius exploring one of the most remote, scenic, wildlife-filled regions on Earth, the great Weddell Sea. This bucket-list trip begins from Ushuaia, nicknamed “the End of the World” en route to the last continent!



Join Faith Ortins from Blue Green Expeditions on an educational, diving-oriented adventure to the Antarctic Peninsula and Weddell Sea. Dive or snorkel, and zodiac-cruise around massive icebergs. Hang out with penguins and leopard seals. Explore pristine polar landscape along with world famous image makers and polar diving specialists on this amazing expedition to Antarctica!



Exclusions:

- Airfare
- Dive insurance (required)
- Travel insurance is highly recommended
- Fuel surcharges
- Tierra del Fuego National Park tour
- Alcohol and bar charges
- Gratuities
- Additional hotel nights, meals on land
- Ushuaia airport-hotel arrival



Pricing:

- Quad - \$12,900
- Twin Porthole - \$14,400
- Twin Window - \$15,400
- Twin Deluxe - \$16,200
- Superior - \$17,200

All prices are in US dollars, per person and based on double occupancy.

\$3000 Nonrefundable deposit. A cabin type will need to be decided at this point
 \$3000 due December 15, 2024
 \$3000 due June 1, 2025
 Balance due October 1, 2025

Contact

619-405-2493
www.BlueGreenExpeditions.com
Faith@BlueGreenExpeditions.com

