

# TRAVEL WITH DUI

## Iceland & Greenland

September 4-18, 2017

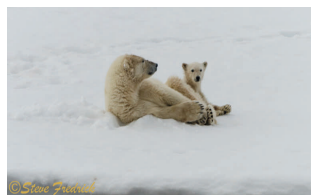
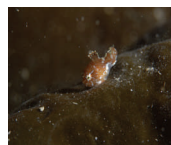
### EXPEDITION OVERVIEW

Join Faith Ortins, VP of DUI, and photographers Michael Salvarezza and Chris Weaver, on an amazing expedition to the far North. The itinerary offers the opportunity to explore both Iceland and Greenland above and below the water.

This unique expedition highlights the best of the Arctic. In Iceland, dive between two continental plates in the gin clear waters of Silfra, explore geothermal lakes and rivers, and dive hydrothermal vents all while enjoying amazing top side scenery, fantastic food and the unique Icelandic culture.

After boarding the ship to Greenland, we will enjoy whale watching and aurora borealis from the ship as we approach Greenland. There we will explore virgin dive sites as well as enjoy spectacular top side scenery including the largest icebergs in the world and traditional villages where people still survive on seals, musk oxen and polar bear. Divers and non-divers alike will be enthralled by the landscape above and below the water.

Our two professional photographers will provide tips to improve your photographic efforts as well as their expertise in photography in these types of areas.



## YOUR ALL INCLUSIVE TRIP INCLUDES

- Accommodations about the *Plancius*, Oceanwide Expedition's flagship. This 287 foot vessel was completely renovated in 2010 and is well setup for diving!
- Hotel accommodations for 6 nights in Iceland— 2 nights in Reykjavik and 4 nights in Akureyri based on double occupancy
- All meals aboard the ship; including snacks and non-alcoholic drinks. Breakfasts are included in Iceland as well as Welcome Dinner on the 1st night. Average lunch and dinner cost in Iceland \$60/day.
- Diving, (usually 2 dives/day) tanks, and weights. As this will be a diving oriented trip, the ship will have extra dive staff to ensure a great experience. In Iceland, we will hit all the "hot" spots including Silfra, the hydrothermal lake and vents and French Gardens among others.
- All land based activities with the exception of camping and specialized photo classes aboard the ship. This includes all land tours in Iceland including lava tube exploration and hiking on lava fields and waterfalls
- Faith Ortins and Paul Holbrook of DUI and Chris Weaver and Michael Salvarezza of Eco Photo Explorers, will be co-leaders of the expedition. Chris and Mike will be available to help with your photography, and Faith will be able to help with your drysuit questions.

Not included: Airfare, lunch and dinner in Iceland, fuel surcharges, alcohol, and gratuities.

## PRICING

There are a variety of cabins on the *Plancius* and the cabin price is dependent on the cabin selected. Hotel in Iceland is double occupancy. Deduct \$500 for non-diver rate in Greenland and \$400 in Iceland. Price is for both trips as a combo:

Quad:	\$7570
Triple:	\$8370
Twin Porthole:	\$9210
Twin Window:	\$9470
Twin Deluxe:	\$9820
Superior:	\$10520

This unique adventure will sell out quickly so please reserve your spot soon! Space is VERY limited. It is possible to do only one part of the trip. Iceland only \$3699

## PAYMENT SCHEDULE

Deposit of \$1000 is due upon booking. At this time, you will be asked to select a cabin type.

2nd Payment: \$2500 September 2016

Balance due: June 1, 2017

For more information or to reserve your spot contact:

Faith Ortins  
Faith@DUI-Online.com  
(800)325-8439 / (619)236-1203 x313

